

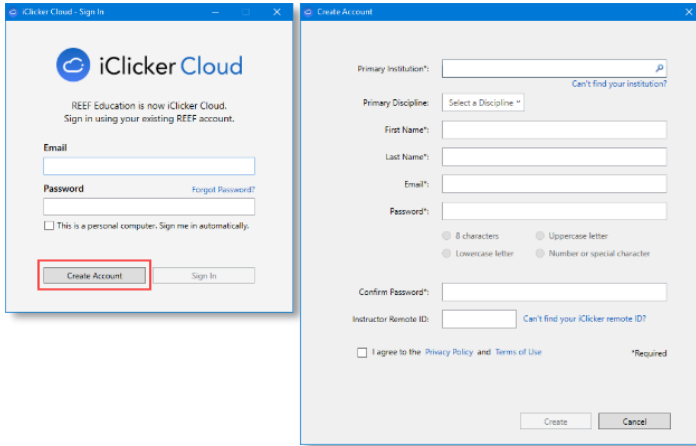
QuickStart: iClicker Cloud - Initial Setup

Step 1: Download and Open iClicker Cloud

Visit the iClicker website to download and launch the software.
<https://www.iclicker.com/instructors/software/iclicker-cloud>

Step 2: Create Your iClicker Account

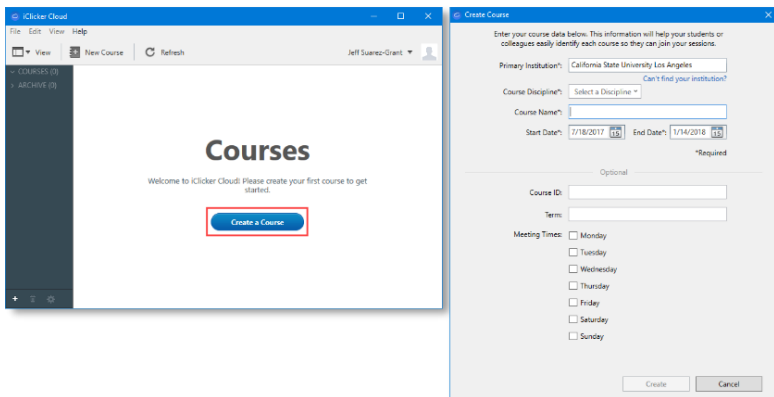
Click **Create Account**. Complete the account signup process.



Step 3: Create Your Course

Click **Create a Course**. Type Cal State Los Angeles in the **Your Institution** field to locate Cal State LA. In the **Course Name** field, type the entire course name using the following format: TERM YEAR Dept. Letters Course Numbers Section Number. Example: FALL 2016 GSWM 1001-01

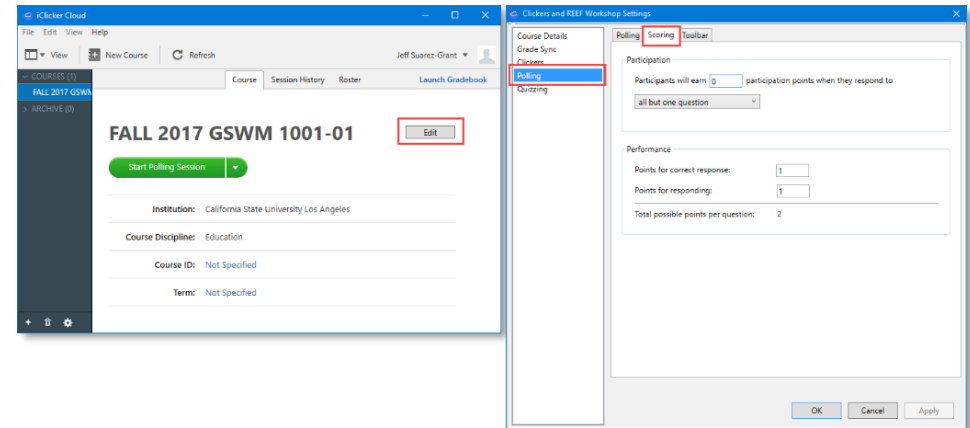
Add **Meeting Times** allowing students to differentiate sections more easily.



Step 4: Configure Scoring Settings

Click **Edit** to access the **Scoring** tab. Adjust the allocation of points to award credit for participation, performance, or both.

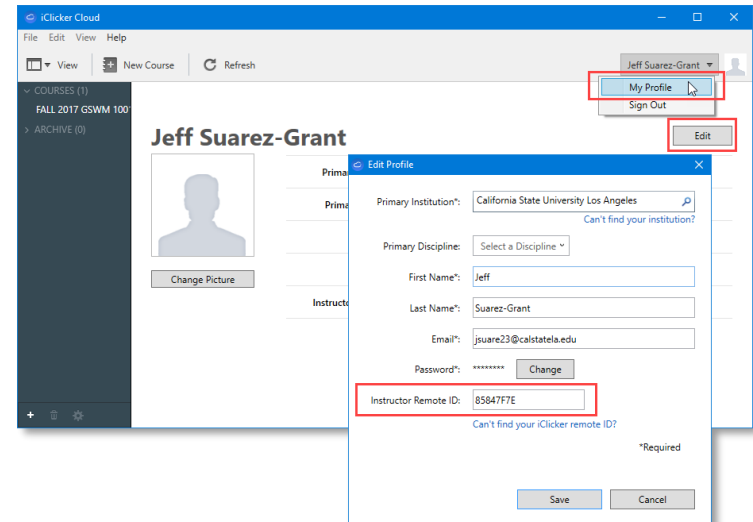
Edit > Polling > Scoring



Step 5: Add Instructor Remote

Connect the iClicker Receiver. Ensure the Instructor Remote is set to frequency code AA. Visit **My Profile** to add the Instructor Remote code.

Username > My Profile > Edit > Instructor Remote ID

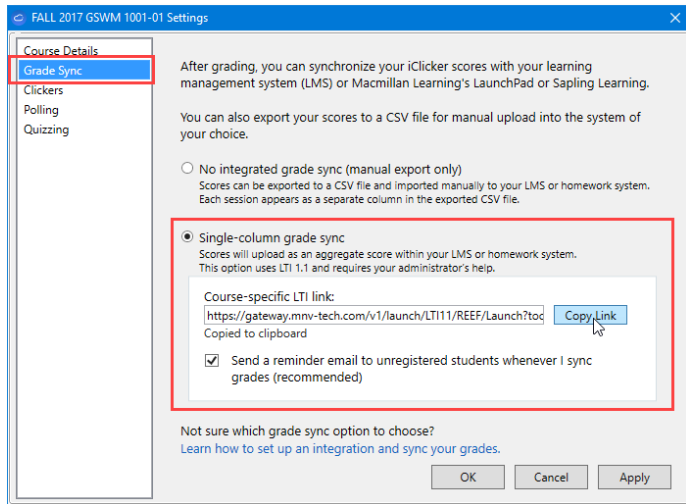


QuickStart: iClicker Cloud - Moodle Integration

Step 1: Copy LTI Link from iClicker Cloud

Access the settings for the iClicker Cloud course you wish to sync with Moodle. Copy the grade sync link to paste in to Moodle later.

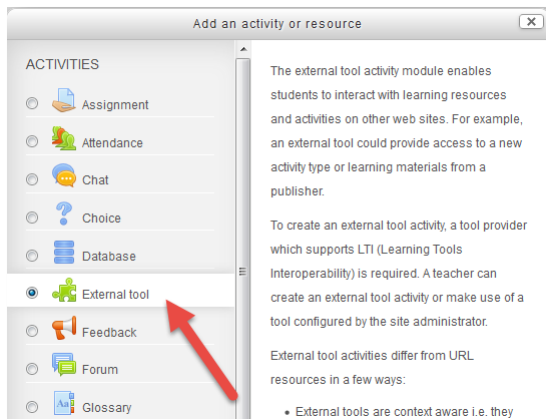
Select Course > Edit > Grade Sync > Copy Link



Step 2: Set Up External Tool Link in Moodle

In your Moodle course, Use Add Activity to create an **External Tool** at the top of your course page where students can easily find it.

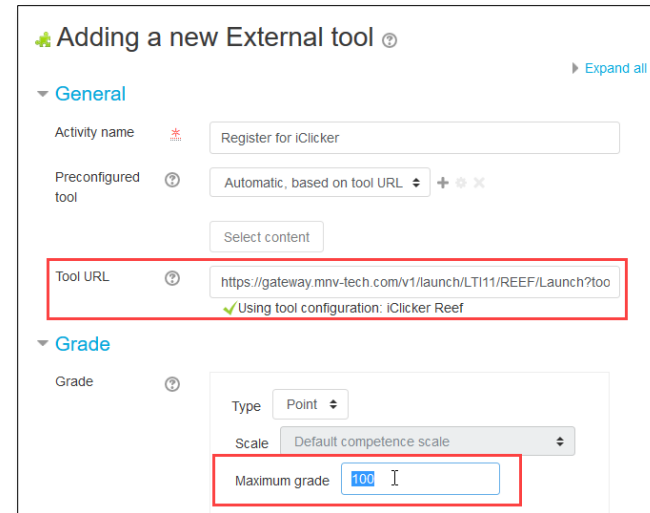
Turn Editing On > Add Activity > External Tool > Add



Step 3: Paste the Link from iClicker Cloud

On the configuration page for the **External Tool**, name the activity **Register for iClicker**. In the Tool URL field, paste the grade sync link from iClicker Cloud.

Navigate to the Grade section to set the total number of points students can earn for participating and answering questions.



Step 4: Instruct Students to Visit Link and Register

After Students click on the REEF Polling link you created in Moodle, they will be asked to log in or create a new account. Students must click the REEF link in Moodle to sync points earned during class sessions.

